

Overview

Vertiv™ Environet™ transforms complexity into simplicity. By providing visibility into your data center environment and delivering access to real-time data, Environet empowers you to proactively manage data center operations. The interactive interface delivers critical information, allowing decisions to be made with speed and confidence.

Benefits

- Maximize data center runtime
- Improve efficiency
- Do more with less
- Proactive monitoring
- Make decisions fast
- Visibility to past, present and future events
- Confidence in data accuracy

Implementation

Environet's interface is web-accessible and user configurable, allowing you to create new sites, add devices, build views and design dashboards that fit your needs. Environet is also backed by a qualified services team that is ready to design and build your system—from turnkey solutions to starter packs, our service team has flexible options to choose from.

How It Works

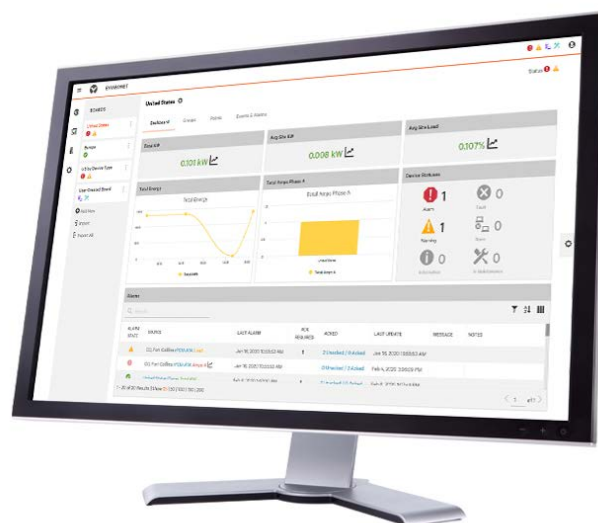
Environet uses common protocols to communicate with data center and facility infrastructure to obtain critical data and device statuses. These values provide alarm notifications and are stored for historic reporting. All statuses and values are displayed within a web browser with editable HTML graphics, so you can visualize the health of your data.

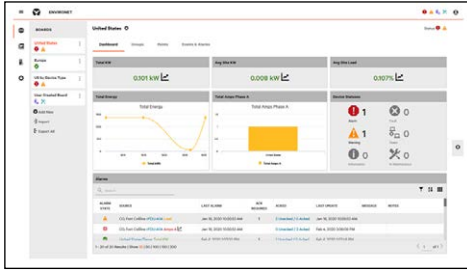
Solving Problems

Visibility into your data center is often not as easy as it should be. Understanding device health, receiving immediate notifications, knowing space capacity, collecting accurate data and reporting key data to management are crucial to effective data center management. Performing all these tasks manually is time consuming, tedious, requires several resources and increases the risk of human error. Environet is a comprehensive software solution which allows you to run your data centers efficiently.

Adding Value

Environet makes it simple to know where action needs to be taken and provides clarity in an often stressful environment. From a single site to multiple facilities, you can access your critical infrastructure within one interface. Cross-site navigation from edge sites to full enterprise or hyperscale facilities allows for informed decision making.



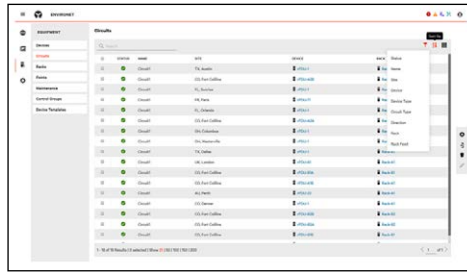
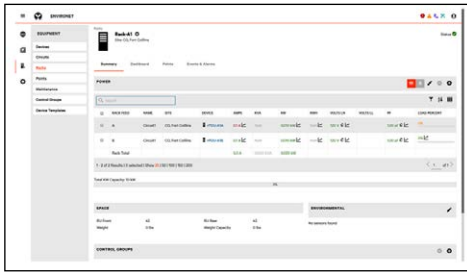


Stay Informed Globally and Locally

Vertiv™ Environet™ has multiple interactive views from global, to site, to device level. The clickable, graphic views summarize alarm details, visualize device, room and site statuses giving users at-a-glance, actionable data for quick, confident decision making.

Make Data-Driven Decisions

Environet™ Analytics provides advanced, automated and custom reporting. Reports are created using data from all aspects of the system, including power, cooling, environmental, racks, assets, tenants and more. Manually execute reports or schedule them ahead of time for delivery. Save time, show efficiency gains to management and analyze trends for proactive management of devices.



Understand Space and Power Capacity

Device management tools give you the ability to know where space is available and where devices reside, making space and power management more effective. Knowing where devices are located means you can deploy teams fast to diagnose issues that arise. Environet also provides insight into power usage to simplify expansion planning.

Ensure SLAs

Environet provides a dedicated feature to manage tenants, groups and departments. Receive quick visualization and the ability to export power and other key metric data, both point-in-time and over a specified period of time. With accurate data from tenant management, you can help ensure SLAs for your customers.

Features

- Real-time Monitoring
- Immediate Threshold & Alarm Notification
- Analytics Engine
- Custom Reports with the ability to schedule
- Predictive Analysis
- Interactive Power One-Line Diagrams
- Energy Cost Analysis
- Custom Views
- Tenant Management
- Maintenance Management
- Capacity Planning
- Third-party Device Support
- Scalable
- Rack and Asset Space Management
- 100% User Configurable and Maintainable (v4.10 +)
- Turnkey Services, Starter pack, or A la carte expert help
- Intuitive, Graphical Interface
- Key Performance Indicators
- PUE and DCIE Calculations
- Import/Export Capabilities
- Control Capabilities
- IPv6 Support

Supported Equipment

Rack PDUs, Room Level UPS and PDU, Battery Strings, RPPs, BCMS, In-Row Cooling Units, Room Cooling Units, Chilled Water Systems, Switch Gear, Generators, ATs, STs, Fire Panels, Leak Detection, Utility Power Meters, equipment communicating via standard protocols.