



Healthcare Solutions for Small Spaces



Table of Contents

PRODUCTS

1. Racks and Integrated Solutions.....	3
2. SmartRow™ Intelligent, Vertiv Integrated Solutions	4
3. Single-Phase UPS & Power Assurance Package	5
4. Three-Phase UPS	8
5. Liebert EXM™ 3-Phase UPS, 10-250kVA	8
6. Rack Power Distribution	9
7. Cooling Solutions.....	10
8. Liebert® CRV™ Self-Contained Row-Based Data Center Cooling, 19.6-40kW.....	11
9. Avocent® KVM Switches and Serial Consoles	12
10. Software.....	17
11. Vertiv™ Environet.....	17
12. Trellis™ Enterprise	17

SOLUTIONS

Racks and Integrated Solutions

Vertiv™ VR Rack System



Capacity: 3,000 lbs Static Load

Rack Sizes: Heights: 42U, 48U

Widths: 600mm, 800mm

Depths: 1100mm, 1200mm

Key Applications: Servers and Networking equipment

Certifications: EIA 310E, UL2416, RoHS, REACH, TAA compliant

The Vertiv VR Rack is delivered ready for high density environments to serve your mission critical needs — even as they evolve and change.

- Available in eight standard sizes with load capacities of 3,000 pounds static and 2,250 dynamic,
- All models feature a frame design that delivers about 2.5 inches of additional useable depth compared to competitive racks.
- Features easily removable side panels to help you access your equipment easily, making it easier to make changes in small spaces.
- Tool-less design features enable easy rack configuration and adjustments, equipment installation and service.
- Comes with a three-year limited warranty against defects in material and workmanship.
- Available to ship with integrated rack PDU.

Vertiv DCE™ Rack System



Capacity: 3,000 lbs Static Load

Rack Sizes: Heights: 24U, 42U, 45U, 48U

Widths: 600mm, 700mm, 800mm

Depths: 1100mm, 1200mm

Key Applications: Servers and Networking equipment

Certifications: EIA 310E, UL2416, BAA/TAA Compliant, IBC2012

The Vertiv DCE rack system is ideal for hospital data centers and is designed to meet flexibility, ease of installation and delivery requirements. The DCE comes in pre-configured rack configurations customized to meet your specific needs.

- Compatible with Vertiv Rack PDUs, Liebert® rackmount UPS, aisle containment, and Liebert modular busway.
- Factory installation of rack accessories for fast deployment.
- Easy installation saves time and money: tool-less hinges, dual split side panels, 19" rail adjustment, U markings on rails, low profile casters, tool-less accessories.
- Comes with a two-year limited warranty against defects in materials and workmanship.

Vertiv™ SmartCabinet™ Intelligent, Integrated Infrastructure in a Single Rack



Capacity: 1.5-16kW

Rack size: 13U, 24U, 42U

Type: Single rack

Floor: Primarily non-raised

Key Applications:

Computer rooms; network closets, data centers

The SmartCabinet provides standardized IT infrastructure for remote locations, network closets and other edge of the network applications. The SmartCabinet comes in pre-engineered configurations that can be tailored to meet your specific needs.

- Simplifies the management and deployment of distributed IT.
- Provides intelligent and integrated infrastructure for any type of IT.
- Remote management, power protection, environmental monitoring, and physical security in one simple to deploy package.
- Pre-configured for various converged IT loads such as Dell PowerEdge VRTX and FlexPod.

Liebert® MCR™ Integrated Support System in a Single Enclosure



Capacity: 1.6 and 3.2 kW

Type: Self-contained

Floor: Primarily non-raised

Key Applications:

Network closets, server closets or small rooms

Certifications:

TAA/BAA compliant

The Liebert MCR is a data center rack system that features a load-sized, computer-grade air conditioner located at the bottom of the enclosure, offering top-mount design, supplying cool air to sensitive equipment on all levels.

- Integrated cooling cabinet with optional power management and monitoring accessories, for loads up to 1.6kW and 3.2kW.
- Includes primary and offers optional backup cooling feature.
- Mobile design for quick deployment – Lets you place a self-contained minicomputer room right where you need it, today or tomorrow.
- Lower system TCO, competitively priced as an integrated system, compared to purchasing separate components.

SmartRow™ Intelligent, Vertiv Integrated Infrastructure in a Self-Contained Line-Up



Capacity: 20-36kW
3-10 racks

Type: Self-contained

Floor: Primarily non-raised

Key Applications:

Small data centers, remote sites, disaster recovery

Certifications:

TAA/BAA compliant

The SmartRow solution has a room neutral design that lets you avoid many of the significant costs that come with a conventional data center buildout.

- Favorable implementation costs compared to using a conventional data center approach, due to savings from integrated fire suppression and ability to work in an existing non-raised floor environment without dedicated room cooling.
- Reduce energy consumption by up to 27% compared to a data center with conventional design, perform less maintenance and reduce the costs of adding new equipment.
- Order and install in just weeks.

Single-Phase UPS & Power Assurance Package

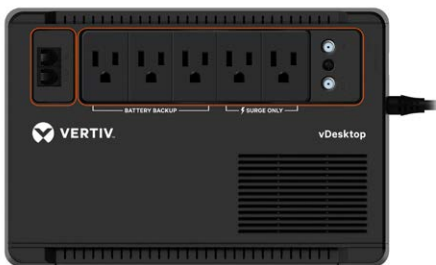
Liebert® PST™5 UPS, 350-500VA



The Liebert PST5 is an offline UPS technology that provides power backup protection for desktop computers, nurse and admissions workstations, wireless networks and routers, surveillance systems and other electronics.

- Designed with easy controls for worry free operation, the Liebert PST5 provides ample time for you to save your work in progress and/or complete an orderly shutdown for your equipment when you experience a power outage.
- ENERGY STAR® certified UPS provides backup power and protection during damaging surges, spikes or power outages while remaining energy efficient.

Vertiv™ Desktop UPS, 400-600VA



The Vertiv Desktop UPS provides battery backup for computers, monitors, routers, modems and other electronics, allowing time for an orderly shutdown during a power outage, or enough time to carry through brief outages.

- Up to 25 minutes of runtime for an entry level PC with the 600VA model, and up to 15 minutes for the 400VA model.
- Compact standby 120V UPS.
- Automatic UPS restart after utility power returns.
- 5 power outlets – three surge and battery protected outlets with two surge-only outlets.
- Co-axial cable surge suppression and telephone line surge suppression connectors for cable or DSL protection.
- Illuminated power/battery indicator, with audible alarm when in battery mode.

Liebert PSA™5 UPS, 500-1500VA



The Liebert PSA5 UPS is an economical, line-interactive UPS battery backup technology designed with the features you need for reliable power protection for nurse workstations, reception areas, computers, phones and other network gear.

- Designed with easy controls for user friendly operation, the Liebert PSA5 provides the run time to save work in process and start an orderly shutdown your equipment.
- Provides backup power and protection during damaging surges, spikes or power outages.
- Excellent three-year full unit coverage including the battery with no-hassle, advanced replacement warranty.

Vertiv™ Liebert® PSI™5 Line-Interactive UPS, 800-5000VA



The Liebert PSI5 is a compact rackmount or tower, AVR line-interactive UPS system designed especially for IT applications such as network closets, small data centers, and public safety distributed antenna system (DAS) applications.

- High 0.9 power factor.
- Six capacities from 800VA to 5000VA with both 120V or 208V models.
- Up to 5 minutes of runtime at full load.
- AVR technology to protect against fluctuation and to prolong battery life.
- Compact 2U rack height.
- Two-year no-hassle advanced replacement warranty.

Power Continuity Services



Vertiv Power Continuity Services is a complete line of battery and UPS replacement services for the Liebert® GXT and PSI systems, commonly used in hospital IT network closets, or in small or remote sites. Three levels of services that help ensure continuous power for your vital applications:

- UPS restoration services provides a replacement UPS battery pack, shipped from Vertiv, ready for your IT resources to install.
- UPS refresh includes a replacement battery pack, installation and startup by our factory-authorized technicians, a wellness check, spent battery removal and disposal, optional two-year service contract, and optional remote services.
- UPS replacement gives you a new UPS with installation, startup, legacy equipment removal and disposal, an optional five-year protection plan, and optional remote services.

Liebert® GXT5™ Single Phase, On-line UPS, 500VA - 10kVA

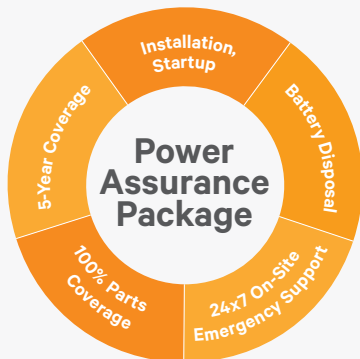


The Liebert GXT5 UPS is an on-line double conversion UPS solution which offers premium power outage protection and continuous power conditioning in a compact and flexible rack/tower form factor.

- Compact rack/tower design provides rack space optimization and flexible installation.
- High power factor (0.9 -1.0) enables more connected loads saving space and costs.
- Up to 95% efficiency in on-line mode means optimized energy management and lower heat dissipation, for energy savings and improved reliability.
- Up to 98% efficiency in Active Eco mode.
- Energy Star® certified.
- Colored graphic LCD with gravity sensitive orientation provides insight to UPS status for easy installation, configuration and operation.
- Integrated battery with self-test and detection capability.
- Battery cabinets with auto-detection ensures the UPS is set up correctly to report available runtime when used with external battery cabinets.
- Comprehensive coverage through a standard three-year advanced exchange warranty.

Certifications: ENERGY STAR 2.0, ANSI C62.41 Category B, ISTA Procedure 1A, UL 1778 4th Edition and CSA 22.2 No. 1071, FCC Part 15 (Class A) - CISPR22 Class A (RFI), WEEE and ROHS2 REACH

Power Assurance Package



Vertiv's exclusive Power Assurance Package offers lifecycle power management for critical single phase UPS systems, eliminating the concerns surrounding all aspects of UPS support.

- Available with Liebert APS, Liebert PSI and Liebert GXT UPS products, from 500VA – 10kVA.
- Installation and startup services.
- Five-year, hassle-free protection plan.
- Safe disposal of UPS/battery.
- 24x7 on-site emergency response.
- Parts and labor coverage.
- Optional LIFE™ Services.

Liebert® APS™ Single Phase, On-line UPS, 5kVA-20kVA



The Liebert APS is a double conversion on-line UPS that provides mission-critical availability while reducing costs and maintaining flexibility for the future.

- Modular, scalable, and fully redundant architecture.
- Ideally suited for small-to-medium data center, network closets and VoIP in either a rack or free-standing format.
- Offers capacity-on-demand with scalable FlexPower™ core modules — allowing capacity upgrades in 5 kVA/4.5 kW increments — without powering down.
- Liebert Intellislot IS-UNITY-DP communications card (Web, SNMP and BMS protocols).
- Convertible rack/tower configuration.
- Optional environmental sensors, connect up to 10 simultaneously (temperature, humidity, contact closure, and leak detection).
- Two-year, hassle-free factory warranty.

Liebert MicroPOD™ Maintenance Bypass Switch, for UPS Systems 3kVA and smaller



The Liebert MicroPOD allows manual transfer of connected equipment to utility power via a maintenance bypass switch, permitting scheduled maintenance or UPS replacement without disrupting data center power.

- “Must have” accessory, provides power transfer to avoid shutdowns due to UPS servicing.
- Specifically designed to mount to the rear of the Liebert GXT UPS or capable of separate rack mounting allows it to be used with any single phase UPS.
- Provides bypass and multiple output plug configurations for easy system configuration.
- Extremely affordable – enables broad usage in healthcare applications.

Three-Phase UPS

Liebert® ITA™2 UPS 3-Phase 10kVA



The Liebert ITA2 UPS offers economical, efficient and reliable three-phase power for critical loads under 10kVA.

- Flexible placement: Use in a rackmount or tower configuration.
- Features scalable battery runtimes, output distribution options, a high power factor and an optional maintenance bypass cabinet.
- Compact, high power density and high power factor maximizes the usable power.
- Lower first costs and lower TCO compared to competitive models.

Liebert EXS™ UPS 3-Phase 10-20kVA



The Liebert EXS UPS delivers maximum power capacity, simplicity, reliability and efficiency in a compact three-phase power solution with a reduced footprint.

- Robust availability is ensured from the integrated maintenance bypass and advanced monitoring capabilities.
- Flexibility is enhanced using output distribution and variable battery runtime options.
- Low TCO is maintained from the high operating efficiency levels and reduced installation costs.

Liebert EXM™ 3-Phase UPS, 10-250kVA



The row-based Liebert EXM is a transformer-free, on-line UPS that provides modular hardware scalability and N+1 redundancy from 10-200kVA in 208 volt configurations and 30-250kVA in 480 volt configurations. Can be used for emergency lighting applications to meet NFPA 101 Life Safety Code requirements in healthcare environment.

- Reduces energy consumption and operating expenses with up to 99% efficiency in Eco Mode and up to 97% efficiency in double conversion mode.
- Offers future-proof scalability for capacity or redundancy.
- Complemented with a line of optimized ancillaries such as maintenance bypass and battery cabinet options designed to minimize footprint and cost.
- Innovative touchscreen control panel offering unprecedented situational awareness, customer configurability, multiple levels of access security and glove safe operation.
- Improves issue resolution and enhances reliability via the optional integrated Albér® BDSU™ battery monitoring system, compatible with traditional VRLA batteries, Lithium Ion batteries, or other energy storage devices.
- Leverage the capabilities of our Unity Communications card and sensors to monitor temperature, humidity, access, leaks and more.

Certifications: OSHPD compliant, TAA/ BAA compliant, UL 1778, UL 924 and CSA certified. Meets current requirements for safe high performance UPS operation. ENERGY STAR® qualified

Rack Power Distribution

Vertiv™ Geist™ Basic Rack PDU



Certifications: TAA/BAA compliant

The **Vertiv Geist Basic Rack PDU** family delivers reliable power distribution at a competitive price point.

- Every unit is 100% tested for reliability and functionality.
- Flexibility to meet a broad range of requirements, with a variety of electrical and receptacle configurations available.
- North American units are UL listed in accordance with common data center and insurance provider requirements.
- Can be shipped integrated in a Vertiv VR rack.

Vertiv Geist Switched Rack PDU



Certifications: TAA/BAA compliant

The **Vertiv Geist Switched Rack PDU** family delivers reliable power distribution with the ability to monitor and control power at each outlet helping achieve reliability required for HIPAA compliance.

- Bistable latching relays significantly reduce the unit's power consumption.
- The hot-swappable interchangeable Monitoring Device (IMD) includes directory access protocol for secure authentication and is upgradeable to add capabilities as needed.
- Visible Light Communication (VLC) enables fast, secure communication with mobile devices, and fault-tolerant daisy chaining can link up to 40 devices to provide redundancy.
- All units come with patented U-Lock receptacles to prevent unintentional dislodging of power cords.
- Can be shipped integrated in a Vertiv VR rack.

Vertiv Geist Monitored Rack PDU



Certifications: TAA/BAA compliant

The **Vertiv Geist Monitored Rack PDU** family delivers reliable power distribution with the ability to monitor input power to plus or minus 1 percent accuracy and provide environmental monitoring capabilities helping achieve reliability required for HIPAA compliance.

- The upgradeable, hot-swappable IMD enables seamless upgrades and replacements.
- Fault-tolerant daisy chaining can link up to 40 devices to provide redundancy.
- All units come with patented U-Lock receptacles to prevent unintentional dislodging of power cords.
- Visible Light Communication (VLC) technology app, which allows fast, secure scanning of rPDUs for real-time operating information.
- Can be shipped integrated in a Vertiv VR rack.

Vertiv™ Rack Mount Power Supply



The **Vertiv RMPSU** delivers the same reliability of Avocent's traditional power solutions but with economies of scale and convenience that aren't possible with external power supplies.

- Each unit provides 8 or 16 independently controllable 12V outputs.
- Cable converters available for 12V to 5V conversions.
- Control and monitor the Vertiv RMPSU via a secure HTTP interface.
- Rated to 500,000 hours.

Distribution Assurance Package



Vertiv's exclusive Distribution Assurance Package offers lifecycle services and support for Vertiv rack PDUs from trained OEM service partners, ensuring system availability.

- Available with Vertiv rack PDUs and Knürr DI-STRIP rack PDUs.
- Startup and installation services.
- OEM expertise.
- Five-year protection plan.
- 24x7 on-site emergency response.
- Parts and labor coverage.
- Optional removal and disposal.

Cooling

Vertiv Geist™ SwitchAir



The **Vertiv Geist SwitchAir** helps prevent failure by channeling cool air from the front of the rack to the air intakes regardless of where the equipment is mounted.

- Creates a barrier to effectively prevent hot exhaust air from recirculating to device intakes.
- Simple and quick installation in all standard racks or cabinets.
- Reduces the chance of network switches overheating and premature equipment failure due to high intake temperatures by directing cool air to device intakes.
- Improves equipment efficiency by providing network equipment with the same cold aisle air temperature as other devices in the rack.
- Standard three-year warranty, upgraded to five years with product registration.

Certifications: TAA/BAA compliant

Vertiv™ VRC™ Rack Cooling System, 3500 Watts



The Vertiv VRC Rack Cooling System provides cooling for small IT rooms, hospital network closets, and imaging equipment rooms.

- Fast, easy installation and set-up: Self-contained VRC100 series models include integrated heat rejection system, pre-charged with refrigerant, and plug connection for quick plug-and-play installation.
- Designed to fit within standard 19" network rack rails.
- Easy to handle; under 150 lbs.
- Saves floor space: Self-contained rack-mounted cooling system: 10U.

Liebert® Mini-Mate™ Cooling System 3.5/28kW



The Liebert Mini-Mate is a zero footprint cooling system for 7x24 temperature and humidity control and air filtration. Ideal for healthcare network closets, imaging equipment rooms, and small data and computer rooms.

- Requires no floor space because it installs above a dropped ceiling.
- Easy to service, requiring only front access for maintenance.
- Improves energy efficiency with free-cooling option.

Liebert CRV™ Self-Contained Row-Based Data Center Cooling, 19.6-40kW



The Vertiv Liebert CRV system offers highly flexible, in-row cooling for hospital data centers requiring higher density cooling with greater efficiency and capacity.

- Integrates within a row of data center racks, providing cooling close to the server heat source, for efficient and effective data center heat management.
- Precision cooling and humidity control.
- Features variable speed EC plug fans and variable capacity digital scroll compressor.
- Operates efficiently with Liebert iCOM™ controls.

Certifications: TAA/BAA compliant, AHRI

Avocent® KVM Switches and Serial Consoles

Avocent® ACS 800 and ACS 8000 Advanced Console Systems



Avocent ACS 800 and ACS 8000 Advanced Console Systems have secure in-band and out-of-band access to manage, monitor, and troubleshoot servers, routers, network switches, firewalls, UPS systems and PDUs.

- Controlled access to your equipment with high reliability, single point of authentication and remote accessibility to safely and efficiently manage your network.
- Zero Touch Provisioning provides automated configuration of ACS devices.
- Integrated Power Management with Vertiv PDUs such as Vertiv rack PDUs, Liebert® UPS systems as well as third-party power product vendors.
- Environmental Sensor Port and digital Inputs to read conditions around equipment such as temperature, humidity, smoke, leak and pressure differential as well as monitoring of dry contact sensors for activity.
- Support for 4G/LTE cellular failover via external Cradlepoint routers as well as optional internal analog modem.

Avocent AV 3000 AutoView™ KVM Switches



The AutoView 3000 series offers consolidated server management options for small data centers and remote/branch/offices including hospital clinics, physician offices, imaging centers, and more.

- Simplify local and remote access to your IT infrastructure with a best-in-class, field-proven line of Avocent switches.
- Switches can be tiered to provide consolidated management of up to 256 targets.
- Common Access Card (CAC)/Smart Card support with encryption and password protection provides security required to solve access control issues.

Avocent AV 100 AutoView KVM Switches



The Avocent AV100 AutoView KVM basic switch offers simplified local access, management and control of up to 16 targets from a single console enabling imaging departments to add equipment and workstations quickly and easily.

- This single user, smaller form factor KVM switch is designed specifically for IT rooms, small data centers and branch offices.
- Single-user, small 0U/1U or desktop form factor KVM switch allows local user to control up to 4 computers from single keyboard and mouse.
- Supports both VGA and DisplayPort (DP) targets with a resolution of up to 2048 x 1536.
- Switch between targets with the simple on-screen display (OSD), intuitive touch buttons, hot-key operation and scan mode.

Avocent® MergePoint Unity™ KVM over IP Switch



Certifications: TAA compliant, FIPS 140-2

Compliance: Based on the FIPS 140-2 validated cryptographic module(s) (Certificate #1051)

The Avocent MergePoint Unity KVM over IP Switch provides IT administrators a complete remote management solution to access and control servers, networking equipment and other devices found in data centers and remote outpatient facilities.

- Meet service level agreements and minimize downtime through a unified approach that provides IT administrators a faster method to diagnose, reconfigure or restore equipment.
- Virtual Media support enables USB media such as CD-ROMs, flash memory and external drives to be virtually attached to a remote server's USB port.
- CAC/Smart Card Support allows remote or local users to map a USB-based smart card reader to the attached servers and authenticate using their smart cards.
- FIPS 140-2 compliance: based on the FIPS 140-2 validated cryptographic modules (certificate number 1051).
- Remote KVM sessions support HTML5 which eliminates the need to install a java on clients.

Avocent HMX 5000/6000 High Performance KVM Systems



Certifications: TAA, CE, FCC approvals

The Avocent HMX High Performance KVM system is a digital, IP-based solution that provides a highly flexible way to connect hundreds of users to thousands of servers and workstation equipment in a secure, real-time manner.

- Ideal for imaging centers and hospital command centers with real-time control with pixel perfect digital video, supporting resolutions up to 2560 x 1600 at 60Hz.
- Supports redundant network operation through units that automatically detect whether the network is in operation and automatically change to a second port when a failure is detected.
- Enables connection of USB devices from mice and keyboards through to graphics tablets and joysticks alongside mass storage devices.
- Remote maintenance and out-of-band BIOS level access with high video performance through Real VNC viewer.
- Easy centralized management with user rights and audit trails through the HMX Advanced Manager.
- Small form factor transmitter available that takes up zero-U of rack space.

Avocent Matrix Direct Connect High Performance KVM System



The Avocent Matrix Direct Connect High Performance KVM System is a digital, direct connect solution that provides a scalable environment through the use of proprietary switches, providing guaranteed performance quality.

- Less than half a second.
- Digital and analog video support with an Advanced Dambrackas™ Video Compression algorithm enables a pixel-accurate, lossless video experience with lag-free, real-time interaction to computing equipment via any USB enabled device.
- The Avocent Matrix Manager allows group and device permission management, event notifications and improved auto failovers.

Avocent® LV 3000 KVM Extenders



Avocent LV 3000 extenders let you place a keyboard, monitor, mouse, speakers and microphone up to 1,000 feet away from a computer or Avocent KVM switch enabling hospital staff to monitor patients and data from alternative locations when away from nurse station.

- VGA resolutions of 1920 x 1200 are achievable at up to 300 meters (1000ft).
- The LV 3000 series extenders are delivered in a zero configuration state so you can plug them in and start working immediately. There's no need for additional drivers or software.
- USB 2.0 (low and full speed) support allows all USB compatible accessories (including isochronous devices) to be extended connected to its 4 port hub.

Avocent LV 4000 KVM Extenders



Avocent LV 4000 KVM extenders enable you to locate your critical computing hardware remotely and continue to provide access to the patient monitoring systems ensuring alarm notifications are received wherever the staff is located.

- The transmitter is powered via its USB port to reduce the need for external power supplies.
- Supports DVI-D (HDMI with adapter) video on single or dual screens, with resolutions up to 1920 x 1200 @ 60Hz.
- The LV 4000 series extenders are delivered in a zero configuration state so you can plug them in and start working immediately. There's no need for additional drivers or software.
- USB 2.0 support for any USB human interface device from mice and keyboards to graphics tablets, touchscreens, jog shuttles, joysticks, 3D explorers and mass storage devices. Full speed (12Mbps) isochronous devices such as headsets are also supported.

Avocent LV 5000 KVM Extenders



The Avocent LV 5000 KVM extenders provide a high quality plug and play solution for the desktop environment such as sleep labs where laboratory staff are stationed in remote control rooms.

- Users can access systems and applications remotely without sacrificing video quality, audio quality or device capability.
- High-definition Display Port Video Supports DisplayPort Dual Mode (DP++) and can transmit maximum resolution of up to 3840 x 2160 (UHD 4K) with a single monitor, or two 1920 x 1200 (WUXGA) video streams in a dual monitor configuration.
- USB 2.0 enables connection of up to six USB human interface devices including mice, keyboards, graphics tablets, touchscreens, jog shuttles, joysticks, 3D explorers, mass storage devices and isochronous devices like webcams and headsets.
- High definition analog stereo audio input and output. S/PDIF input also supported.

Cyber™ SCKM 100 Secure Desktop KM Switches



Certifications: TAA/BAA compliant, CE, RCM, FCC class B, VCCI, TUV US, TUV Canada, NIAP Protection Profile for Peripheral Switching Devices, version 3.0 compliant

The Cyber SCKM switch provides real-time access to up to 4 systems at a time from a single keyboard and mouse.

- Cursor navigation switching lets users switch control between systems by simply moving the mouse cursor from one display monitor to another.
- An optional Dedicated Peripheral Port (DPP) provides a secure connection to CAC readers, as well as additional types of authentication devices including facial recognition scanners and fingerprint readers.

Cyber SC 800 and SC 900 Secure Desktop KVM Switches



Certifications: TAA compliant, BAA, NIAP Common Criteria Protection Profile (PP) for Peripheral Sharing Switch (PSS) v.3.0 accredited

Vertiv™ Cyber SC800 / 900 Secure Desktop KVM switches are field-proven, secure, KVM switching solutions with special support for government agencies and healthcare organizations to help maintain privacy of patient data and restrict access.

- Compliant with the stringent specifications of the U.S. government NIAP / Common Criteria Protection Profile for Peripheral Sharing Switch version 3.0.
- Improves security at the desktop environment using premium security technology that eliminates the need for additional connected devices.
- Prevents information leaks, transfer or crosstalk between adjacent ports and filters ultrasonic audio frequencies via unidirectional optical data diodes (UODD)

Cyber SCM 100 Series Secure Matrix KVM Switches



Certifications: TAA compliant, BAA, NIAP Common Criteria Protection Profile (PP) for Peripheral Sharing Switch (PSS) v.3.0 accredited.

The Cyber SCM 100 series secure desktop Matrix KVM switch offers a proven solution for guarding against cyber intrusion at the desktop. Ideal for hospital applications including imaging centers and laboratories.

- Certified to meet the requirements of the latest NIAP Protection Profile for Peripheral Sharing Devices version 3.0.
- Independently switched display connections - situational awareness of any two connected systems.
- Hardware-based peripheral isolation loads all firmware on ROM with no keyboard buffering or memory.
- Dedicated Peripheral Port permits a secure connection to external USB devices, including CAC smart card readers, fingerprint readers, and face recognition devices.

Avocent® SV 200 and SV 300 Desktop KVM Switches



Avocent Desktop KVM switches simplify access to essential business systems.

- Advanced video support including DVI-I, HDMI, DisplayPort, and support for resolutions up to UHD 4K assures image quality is highly accurate and video plays at the highest definition possible.
- Managed copy and paste allows content to be copied from one system to another.
- Independent audio and USB switching lets users freeze audio and USB 3.0 peripherals while simultaneously working on a different system.
- Multiple USB ports provide easy connectivity to external USB devices, quick data transfer and high-speed charging of mobile devices.
- Mobile high-definition link allows media contained on mobile devices to be viewed on connected HDMI monitors.

Avocent SVKM 100 Desktop KM Switches



The Avocent SVKM switch provides real-time access to up to 4 systems at a time from a single keyboard and mouse.

- Cursor navigation switching lets users switch control between systems by simply moving the mouse cursor from one display monitor to another.
- Independent audio and USB switching gives users the ability to freeze audio and USB devices to a specific channel so these feeds are maintained as the cursor switches between system monitors.
- Managed copy and paste allows content to be copied from one system to another.
- High-speed mobile device charging port provides a quick way to charge mobile phones and other devices.
- Pre-set display configurations are easily modified for specific environments with a user-friendly administrator tool, enabling flexible assignment of USB devices for each user.

Avocent LCD Local Rack Access Console



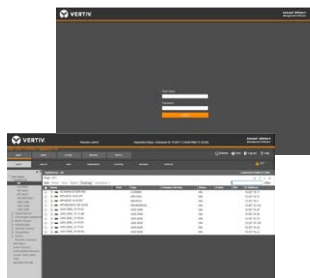
The Avocent LRA Console family provides the simplicity, efficiency and ease of use to make it the perfect in data center access point.

- Provides an installed and integrated access point in the data center.
- Requires only 1U of rack space.
- 1U rack mount.
- Keyboard available in 11 languages.
- Power efficient during operation and standby.
- Available in an 8- or 16-port digital KVM switch bundle.

Certifications: TAA compliant, UL, CE, CCC, BSMI, RCM, cUL, IC, EAC, VCCI, KCC FCC Class A

Software

Avocent® DSView™ Software



Avocent DSView software manages your Avocent hardware via secured web-browser enabled sessions of infrastructure controls.

- Get remote access to servers and the network infrastructure incorporating a hub-spoke framework for database redundancy and distributed access.
- Provides detailed event tracking, session logging and alert notifications.
- Securely and conveniently combine access to out-of-band and in-band services.

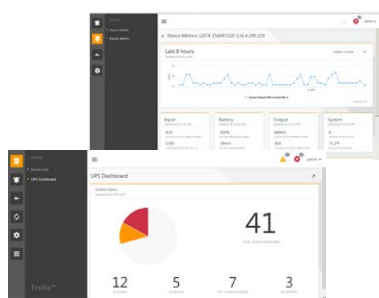
Vertiv™ Environet



Vertiv Environet provides extensive facilities management tools and high-level management of IT assets for visibility into your data center operations through a single interface.

- The vendor neutral software delivers real-time notifications, comprehensive reporting, user configurability and space management.
- Access to real-time, holistic information helps maximize data center runtime.
- Gives you confidence in your data for quick decision making allowing you to do more with less.

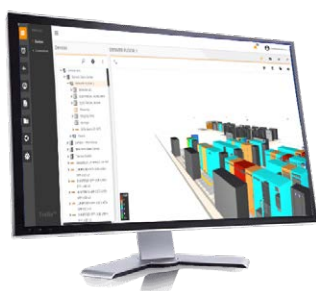
Trellis™ Power Insight



Trellis™ Power Insight is a web-based solution for managing and monitoring up to 100 Vertiv UPSs and rPDUs that provides a quick way to safely shutdown IT devices based on user-configured parameters.

- Provides a single point of access for your UPSs and rPDUs.
- Sends alerts if there are issues with the connected devices.
- Graceful server shutdown if an event occurs.
- Helps track devices and maintain inventory information.

Trellis Enterprise



Trellis Enterprise is a full data center infrastructure management (DCIM) solution with a robust feature set for facilities and IT that mitigates downtime risk while optimizing efficiency.

- Reduce inefficiencies in your infrastructure without disrupting existing operations.
- Plan for growth and support your business initiatives.
- Improve agility, accuracy and access for all data with this vendor neutral solution.



Vertiv.com | Vertiv Headquarters, 1050 Dearborn Drive, Columbus, OH, 43085, USA

© 2019 Vertiv Group Corp. All rights reserved. Vertiv, and the Vertiv logo trademarks or registered trademarks of Vertiv Group Corp. All other names and logos referred to are trade names, trademarks or registered trademarks of their respective owners. While every precaution has been taken to ensure accuracy and completeness herein, Vertiv Group Corp. assumes no responsibility, and disclaims all liability, for damages resulting from use of this information or for any errors or omissions. Specifications are subject to change without notice.