



**VERTIV™**

## **S-SERIES 2**

Superior Rack Solution for  
Data Center & Network Closets



**RACKS AND CONTAINMENT**

**Vertiv S-Series Rack**

The S-Series Rack is an innovative enclosure system that integrates your computing hardware, power management technologies and peripherals in your data centres and computer rooms. It gives superior design and flexibility, allowing optimal data centre performance and easy installation.



**S-27 Series**

42U, 45U and 48U Sizes



**S-22 Series**

24U, 42U and 47U Sizes

**FREE STANDING SERVER RACK**

The S-27 Series Rack from Vertiv provides cooling, power distribution, cable management, and environmental monitoring infrastructure for application in IT environment.

- Perforated doors for optimal front-to-rear airflow up to 78%.
- Tool less mounting slots for vertical PDUs and cable managers.
- Loading capacity up to 1500kgs

Vertiv's S27 models of the S-Series server rack is the ultimate solution designed and engineered for demanding data center environments.

To achieve optimum versatility with in the server rack, users can set multiple depths throughout the rack by adjustable 19" mounting rails mounted on heavy duty side supports. Horizontally divided side panels provide ease of access and convenient post-installation maintenance. Over 78% perforations on front and rear door enable optimum airflow within the rack. Flat-pack option enables savings up to 60% in the transport cost and warehouse space.

**S27-Series Rack Features:**

- Strong and durable solid frame that can hold up to 1,500KG static load
- 78% open high perforated doors for optimal air flow
- Convenient tool-less installation of cable and air flow management
- Fast deployment leveling feet
- Heavy duty castor wheels

**You need a rack ready to go**

Get what you need, when you need it:

- Enclosure height of 42U, 45U and 48U
- Width of 600mm or 800mm
- Depth of 1070 / 1200mm.
- Other dimensions available on request.
- Side panels
- Air flow management
- Cable management options
- Mounting accessories
- Standard Colour RAL 9005 (Optional Colour RAL 7035)

*Other colours options, available on request*

**Excellent Rack Cooling Efficiency**

- Optimal heat management with 78% perforation rate for both front and rear doors
- Optional blanking panels for air flow are available

**Enhanced Rack Installation Space Efficiency**

- Solid steel frame with installation slots
- Rack static load capacity of 1,500KG

**Enhanced Rack System Applicability In Data Centres**

- Accessories available for cabling and air flow management
- Optional features for specific requirements in data centres available

**Increased Convenience In Installation And Maintenance**

- Tool-less design for cable, airflow management and PDU mounting for flexible and quick installation
- Low profile casters pre-configured for easy deployment and mobility
- Self-levelling feet for easy installation

**Increased Rack Adaptability And Expansibility**

- Integral part of the total data centre solution of Vertiv
- Highly adaptable and flexible to integrate power, cooling and monitoring equipment
- Containment solutions available

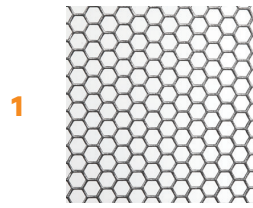
## S-27 Series



42U, 45U and 48U Sizes  
(Other dimensions  
available upon request.)

### INCLUSIONS

- Single arc mesh front door
- Double flat rear mesh doors
- Roof top with cable entry plates
- 2 pairs of side panels, top and bottom.
- 4 x (19") EIA-310 vertical mounting rails
- 4 fast deploying leveling feet and 4 casters
- 42U vertical cable tray for dual PDU mounting x 2
- All rack panels are inherently grounded
- 50 sets of captive M6 nuts and M6 screws
- Integrated baying kit
- Open bottom area (optional cover)



1

**78% Open Perforated Doors**  
Optimal performance of air flow



2

**Tool-Less Cable Management**  
Allows flexible cabling in the rack for easy installation



3

**Convenient and Quick Baying**  
Support baying for racks with side panels



4

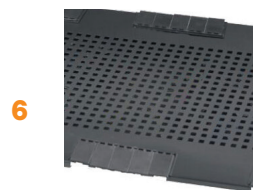
**High capacity with 1,500KG Static Load**  
Seismic rack solution available



5

**Ready-made Access Control On Rack**

- Same key for front and rear doors
- Lockable side panels



6

**Roof Top Module Cable Entry**  
Tool-less installation of cover plate



7

**Solid Steel Frame With Installation Slots**

- Convenient and efficient design for tool-less cable management
- Enhance installation space efficiency



8

**Tool-Less Blanking Panel**  
High efficiency design for installation and maintenance



### FREE STANDING NETWORK RACK

Vertiv S22-Series Rack providing cooling, power distribution, cable management, and environmental monitoring for application in IT environment.

- Most popular model in the market
- Enough cabling space inside 800mm wide rack.
- Perforated doors for massive front-to-rear airflow up to 60%.
- Tool less mounting slots for vertical PDUs and cable managers.
- Loading capacity up to 800kgs

Vertiv's S22 models of the S-Series network rack is specially designed for network servers of high density in IT environment.

With accessories of bracket, cable manager, PDU fixing slot, high quality locks, supply safe place for important IT equipment.

Over 60% perforations on front and rear door enable optimum airflow within the rack. Flat-pack option enables savings up to 60% in the transport cost and warehouse space.

### Application

- Support patch panels and fiber enclosures or a mix of patch panels, fiber enclosures and switches when cabinets are deployed in data centers or other network facilities.
- Support network switches in hot aisle / cold aisle data center environments.
- Store and secure computer server, data storage and network equipment in the data center, computer room or network environment.

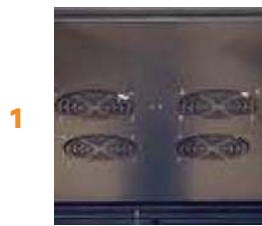
### Highlights

- **Optional doors**
  - Option of toughened glass or vented holes for front doors.
  - Standard Rack is with Honeycomb perforation.
- **Easy Transportation**
  - S22-Series network cabinet can be shipped in knock-down or flat-packed method whose packing dimension can be reduced by 2/3.
- **More Spaces for Cable Management**
  - Vertical installation metal management in 800mm wide rack provide more space for network cable management.
- **Various Sizes**
  - The width from 600mm to 800mm, the height from 24U to 47U, the depth of 1000mm, 1200mm. Other sizes and model available upon request.

## S-22 Series



24U, 42U and 47U Sizes  
(Other dimensions available upon request.)



1

### Optional Fan Tray on the Top Cover

Optional Fan tray:

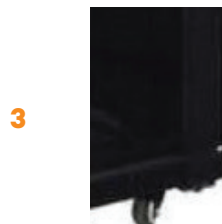
- 2 fans for 600mm
- 4 fans for 800mm and more allow air flow in the cabinet.



2

### Side Panels (Lockable / Removable)

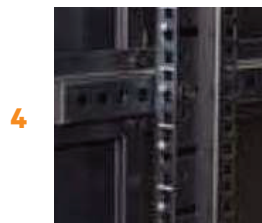
Side panels are removable and lockable, improving ease of installation and service. Standard models include two side panels.



3

### Adjustable Levelling Feet and Casters (2 with brake)

Adjustable levelling feet and casters (with brake) are available simultaneously



4

### Adjustable Mounting Rails

- Front and rear sets of vertical rails adjust in quarter-inch increments.
- Adjustment is quick and convenient.
- Simply unscrew the rails, slide them to the required depth and refasten.



5

### Easy structure for assembly

Easy structure for assembly will shorten the assembly time.



6

### Ready - made Access Control on Rack

- Same key for front and rear doors
- Other locks available upon request.

## INCLUSIONS

- Single flat mesh front door
- Double flat rear mesh doors
- Roof top with cable entry plates
- 1 pair of side panels.
- 4 x (19") EIA-310 vertical mounting rails
- 4 x fast deploying leveling feet and 4 casters
- 2 x vertical cable tray for dual PDU mounting
- All rack panels are inherently grounded
- 50 sets of captive M6 nuts and M6 screws
- Integrated baying kit
- 1x bottom cover with cable entry plate

## MODEL &amp; PART NUMBERS

S27-SERIES RACK	PART NUMBER
S27-Series rack - 42Ux600Wx1070D with Side Panels, RAL9005 Black	S27-61042
S27-Series rack - 42Ux600Wx1200D with Side Panels, RAL9005 Black	S27-61242
S27-Series rack - 42Ux800Wx1070D with Side Panels, RAL9005 Black	S27-81042
S27-Series rack - 42Ux800Wx1200D with Side Panels, RAL9005 Black	S27-81242
S27-Series rack - 45Ux600Wx1070D with Side Panels, RAL9005 Black	S27-61045
S27-Series rack - 45Ux600Wx1200D with Side Panels, RAL9005 Black	S27-61245
S27-Series rack - 45Ux800Wx1070D with Side Panels, RAL9005 Black	S27-81045
S27-Series rack - 45Ux800Wx1200D with Side Panels, RAL9005 Black	S27-81245
S27-Series rack - 48Ux600Wx1070D with Side Panels, RAL9005 Black	S27-61048
S27-Series rack - 48Ux600Wx1200D with Side Panels, RAL9005 Black	S27-61248
S27-Series rack - 48Ux800Wx1070D with Side Panels, RAL9005 Black	S27-81048
S27-Series rack - 48Ux800Wx1200D with Side Panels, RAL9005 Black	S27-81248

S22-SERIES RACK	PART NUMBER
S22-Series rack - 24Ux600Wx1000D with Side Panels, RAL9005 Black	S22-61024HI
S22-Series rack - 24Ux600Wx1200D with Side Panels, RAL9005 Black	S22-61224HI
S22-Series rack - 42Ux600Wx1000D with Side Panels, RAL9005 Black	S22-61042HI
S22-Series rack - 42Ux600Wx1200D with Side Panels, RAL9005 Black	S22-61242HI
S22-Series rack - 42Ux800Wx1000D with Side Panels, RAL9005 Black	S22-81042HI
S22-Series rack - 42Ux800Wx1200D with Side Panels, RAL9005 Black	S22-81242HI
S22-Series rack - 47Ux600Wx1000D with Side Panels, RAL9005 Black	S22-61047HI
S22-Series rack - 47Ux600Wx1200D with Side Panels, RAL9005 Black	S22-61247HI
S22-Series rack - 47Ux800Wx1000D with Side Panels, RAL9005 Black	S22-81047HI
S22-Series rack - 47Ux800Wx1200D with Side Panels, RAL9005 Black	S22-81247HI

## ACCESSORIES

SHELVES	PART NUMBER
Fixed shelf 650mm depth (adjustable). Load capacity 45kg	SAFSHELF-650
Fixed shelf 750mm depth (adjustable).Load capacity 45kg	SAFSHELF-750
High Loading Fixed shelf 650mm depth (adjustable).Load capacity 90kg	SAFSHELFHD-650
High Loading Fixed shelf 750mm depth (adjustable).Load capacity 90kg	SAFSHELFHD-750
Adjustable sliding shelf 650mm depth. Load capacity 35kg.	SASSHELFSG-650
Adjustable sliding shelf 750mm depth. Load capacity 35kg.	SASSHELFSG-750
Sliding shelf 550mm depth. Load capacity 35kg.	SASSHELF-550
Sliding shelf for 650mm depth. Load capacity 35kg.	SASSHELF-650

HORIZONTAL CABLE MANAGEMENT	PART NUMBER
1U metal Horizontal cable manager	SMCABLEDUCT1U
2U metal Horizontal cable manager	SMCABLEDUCT2U
1U plastic Horizontal cable manager	SPCABLEDUCT1U
2U plastic Horizontal cable manager	SPCABLEDUCT2U
1U metal Horizontal cable ring	SMCABLERING1U
2U metal Horizontal cable ring	SMCABLERING2U
1U plastic Horizontal cable ring, metal base	SPCABLERING1U
2U plastic Horizontal cable ring, metal base	SPCABLERING2U
1U High-density horizontal cable manager	SCABLEMNRHD1U
2U High-density horizontal cable manager	SCABLEMNRHD2U
1U double-sided plastic cable manager	SFPCABLEDUCT1UDS
2U double-sided plastic cable manager	SFPCABLEDUCT2UDS
1U single-sided plastic cable manager	SFPCABLEDUCT1U
2U single-sided plastic cable manager	SFPCABLEDUCT2U

VERTICAL CABLE MANAGEMENT	PART NUMBER
1U Vertically tool less mounting cable ring with mounting buttons,2pcs/set	SPCABLERING1UVRT
2U Vertically tool less mounting cable ring with mounting buttons,2pcs/set	SPCABLERING2UVRT
1U Vertically tool less mounting cable duct with mounting buttons,2pcs/set	SPCABLEDUCT1UVRT
2U Vertically tool less mounting cable duct with mounting buttons,2pcs/set	SPCABLEDUCT2UVRT
42U Enlarger Vertical cable manager for 800mm wide rack	SCABLEMNVRT42-SSG
45U Enlarger Vertical cable manager for 800mm wide rack	SCABLEMNVRT45-SSG
48U Enlarger Vertical cable manager for 800mm wide rack	SCABLEMNVRT48-SSG

RACK TOP CABLE MANAGEMENT	PART NUMBER
23.6"(600mm)W Power Shielding Trough, For 23.6"(600mm)W rack	SMCABLETRAY600
31.5"(800mm)W Power Shielding Trough, For 31.5"(800mm)W rack	SMCABLETRAY800
23.6"(600mm)W Data Shielding Partition, For 23.6"(600mm)W rack	SNCABLETRAY600
31.5"(800mm)W Data Shielding Partition, For 31.5"(800mm)W rack	SNCABLETRAY800

TOP MOUNT FAN TRAY	PART NUMBER
FAN TRAY WITH 4 FAN, MOUNT ON TOP PANEL of S27-series rack	S27FANTRAY4
FAN TRAY WITH 6 FAN, MOUNT ON TOP PANEL of S27-series rack	S27FANTRAY6
FAN TRAY WITH 6 FAN, MOUNT ON TOP PANEL of S22-series depth 1000mm rack	S22FANTRAY4-1000

AIR FLOW MANAGEMENT	PART NUMBER
1U metal blank panel, include 4pcs mounting screws and nuts	SM1UPANEL
2U metal blank panel, include 4pcs mounting screws and nuts	SM2UPANEL
3U metal blank panel, include 4pcs mounting screws and nuts	SM3UPANEL
4U metal blank panel, include 4pcs mounting screws and nuts	SM4UPANEL
5U metal blank panel, include 4pcs mounting screws and nuts	SM5UPANEL
1U toolless snap metal blank panel	SMF1UPANEL
2U toolless snap metal blank panel	SMF2UPANEL
3U toolless snap metal blank panel	SMF3UPANEL
4U toolless snap metal blank panel	SMF4UPANEL
5U toolless snap metal blank panel	SMF5UPANEL
1U blanking panel with brush strip	S1UBRUSHPANEL
1U toolless mounting plastic blank panel	SP1UPANEL
2U toolless mounting plastic blank panel	SP2UPANEL
11 pcs/set for a vertical rail ,square hole brushes panel	SBRUSHPANELVRT42
11 pcs/set for a vertical rail ,square hole brushes panel	SBRUSHPANELVRT45
13 pcs/set for a vertical rail,square hole brushes panel	SBRUSHPANELVRT48
Brush panel anti dust under racks bottom , front& rear side, suitable 600mm width cabinet	SURBRUSH600
Brush panel anti dust under racks bottom , front& rear side, suitable 800mm width cabinet	SURBRUSH800

BOTTOM PLATE	PART NUMBER
BOTOM PLATE FOR 600 x 1000 RACKS	SBTP61S
BOTOM PLATE FOR 600 x 1200 RACKS	SBTP612S
BOTOM PLATE FOR 800 x 1000 RACKS	SBTP81S
BOTOM PLATE FOR 800 x 1200 RACKS	SBTP812S

OTHER ACCESSORIES	PART NUMBER
M6 cage nut set, 50pcs/set, M6 philips screw,M6 cage nut, M6 plastic washer, black colour	SCAGENUT50
19" Copper Earth Bar, silver plated	SGROUNDINGKIT
Cable Entry Cover	SCABLEENTRYCOVER5
3-digital code lock	SCOMBOLOCK
Anti-tilt stabilizer	SLSR



**VertivCo.com**

© 2018 Vertiv Co. All rights reserved. Vertiv, the Vertiv logo are trademarks or registered trademarks of Vertiv Co. All other names and logos referred to are trade names, trademarks or registered trademarks of their respective owners. While every precaution has been taken to ensure accuracy and completeness herein, Vertiv Co. assumes no responsibility, and disclaims all liability, for damages resulting from use of this information or for any errors or omissions. Specifications are subject to change without notice.

Vertiv-SERIES-Rack-BR-EN-Asia-v1